

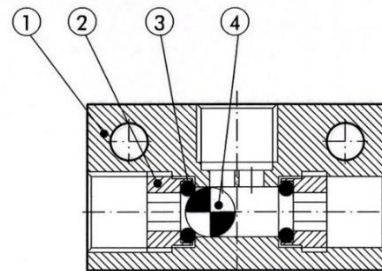
Circuit selector valves select two separate input signal without creating reciprocal interference, giving a single output signal.

TECHNICAL DATA

		1/8"	1/4"
Nominal flow rate at 6.3 bar ΔP 1 bar	Nl/min	500	1300
Operating temperature range	°C	-10 to + 80	
	°F	14 to 176	
Operating pressure	bar	2 - 10	
	MPa	0.2 - 1	
Fluid		Lubricated or unlubricated filtered air	

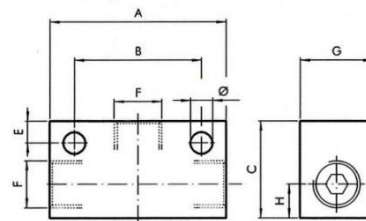
COMPONENTS

- ① Body: passivated aluminium
- ② Insert: brass
- ③ Seal: NBR
- ④ Ball: stainless steel



DIMENSIONS AND ORDERING CODES

Art. No.	Description	A	C	G	H	E	B	F	Ø	Ident No.
ODER-18	VOR 1/8	36	20	15	7.5	4	25	G 1/8	4.5	106703
ODER-14	VOR 1/4	43	25	20	8.5	6.5	25	G 1/4	4.5	106704



Article No.	Ident No.
ODER-18	106703
ODER-14	106704